

GS8 Modular Gateway Connecting to the Zultys MX250

Application note, 96-90004-00, July 2008

This document is an application note for connecting the GS8 modular gateway with Zultys MX250 IP PBX.

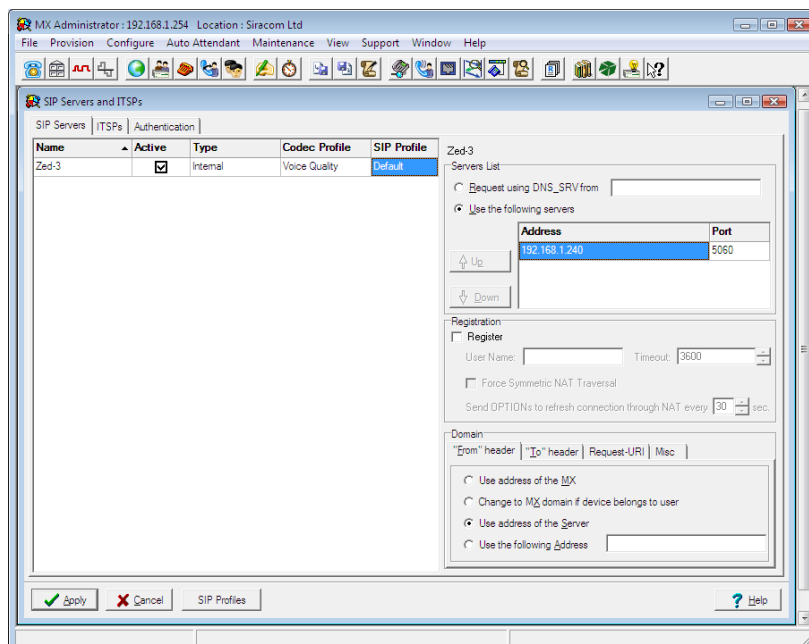
1 Configuring the Zultys MX

1.1 SIP Servers

1. Select "**Provision/SIP Servers**" from the menu options at the top of MXAdmin
2. Add a new SIP server by selecting the right mouse button and selecting "**Add**"
3. Change the Name of the SIP Server and select "**Voice Quality**" Codec Profile
4. Under the Servers List Add a Server by selecting the right mouse button and selecting "**Add**"

Enter the IP address of the Zed-3 GS8 Modular Gateway.

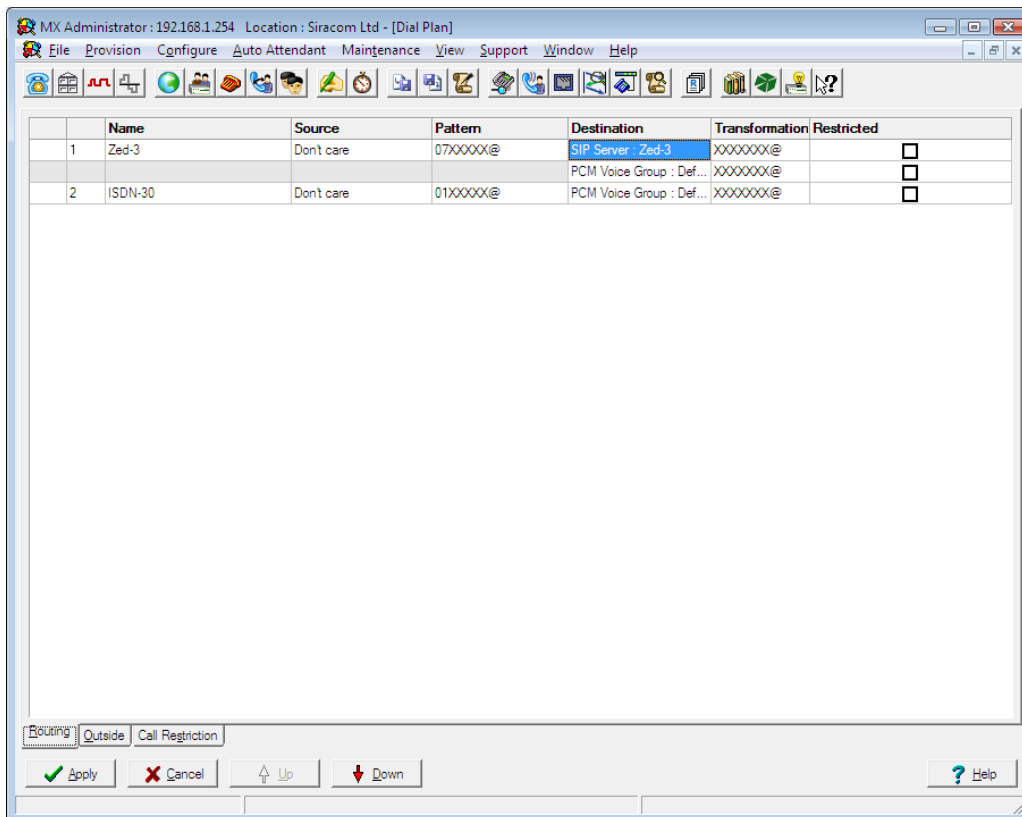
5. Under the Domain section select "**Use address of the server**" and click "**Apply**"



1.2 Dialplan - Numbers beginning with 07 to go through GS8 Gateway (Backup route via ISDN30)

1. Select "**Configure/Dialplan**" from the menu options at the top of MXAdmin.
2. Right Click on the Dial Plan and select "**New Pattern**"
3. Name the Pattern "**Zed-3**", change the pattern to "**07XXXXX@**", select "**SIP Server: Zed-3**" from the drop down list and amend the transformation to "**XXXXXXX@**".
4. In order to create a backup route for all mobile calls in the event of the GS8 Gateway being unavailable, Highlight the "**Zed-3**" Pattern and select "**New Route**".

Select "**PCM Voice Group: default**" and change the transformation to "**XXXXXXX@**".



If you face any problem to configuring this please send a mail to Support@zed-3.com.